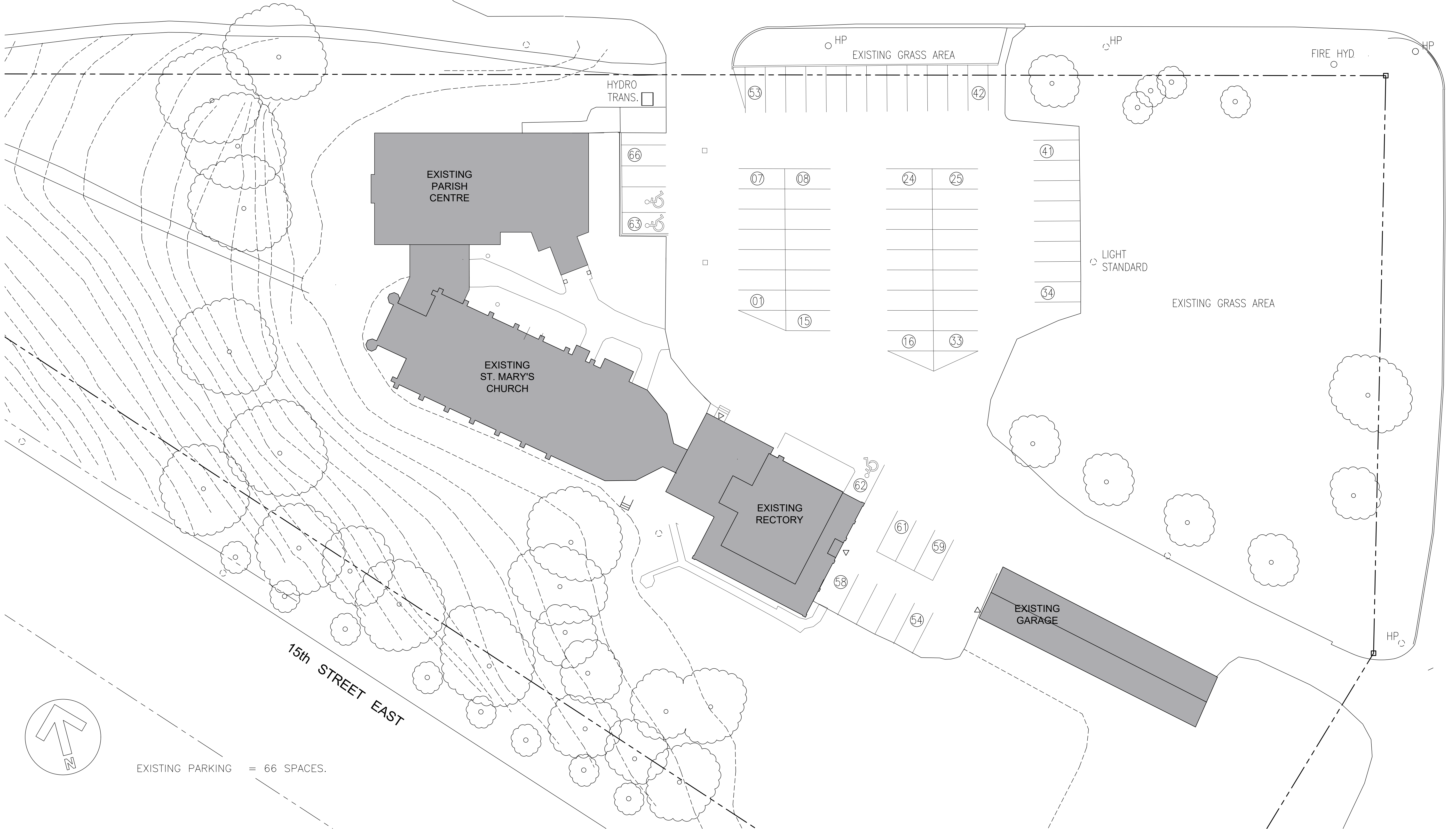
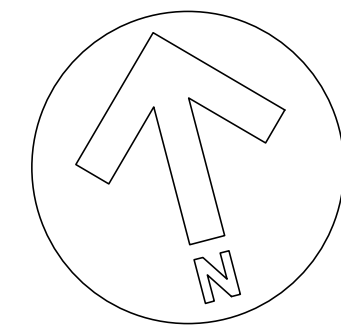


16th STREET EAST

6th AVE. EAST



EXISTING PARKING = 66 SPACES.



G.M. DIEMERT ARCHITECT INC.

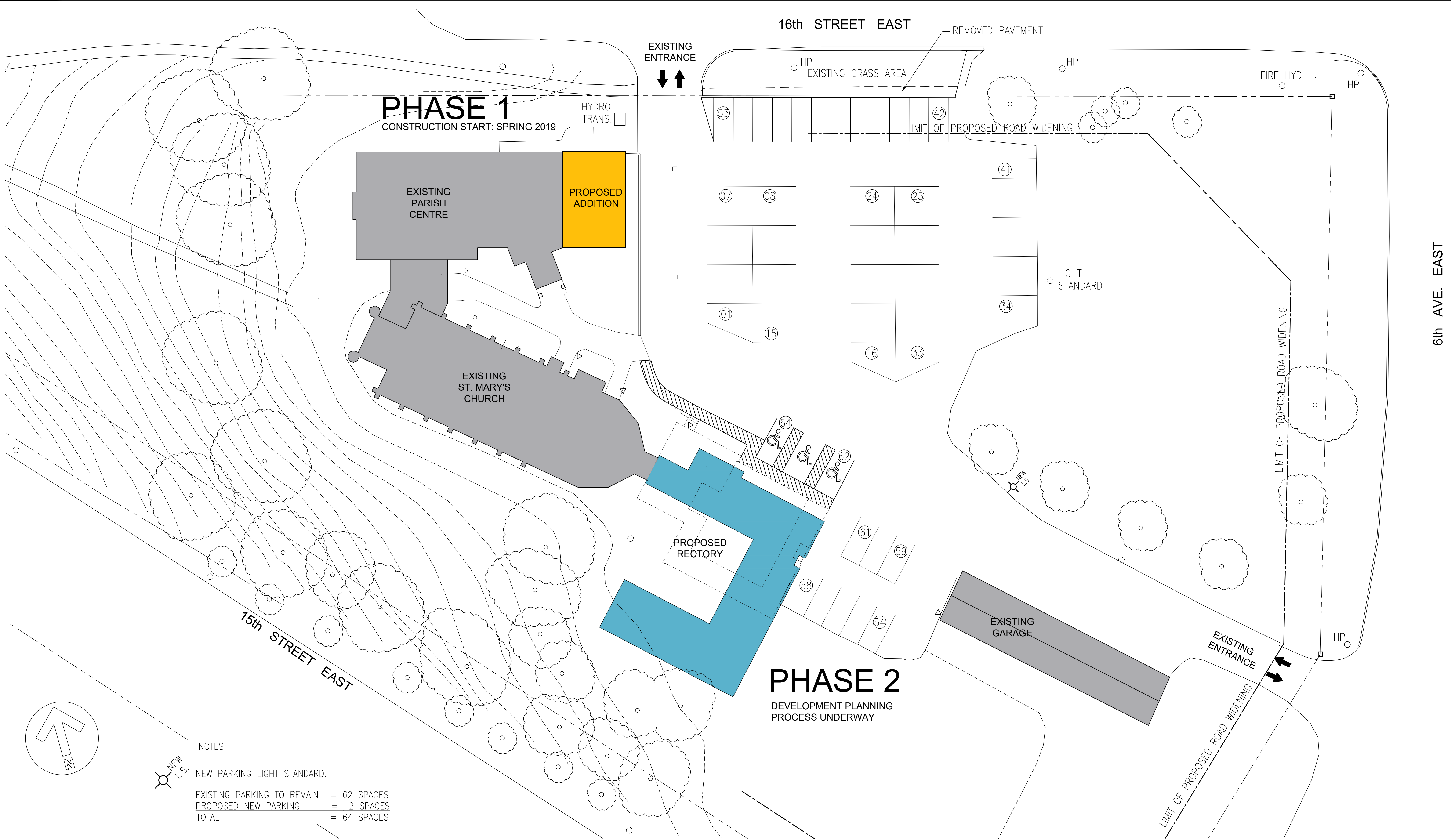
957 FOURTH AVENUE EAST
OWEN SOUND, ONTARIO
SUITE 201
N4K 2N9 (519)376-1975

Existing Site Plan

January 09, 2019


**St. Mary of the Assumption
Roman Catholic Church**

551 15th Street East, Owen Sound, Ontario



PHASE 1
CONSTRUCTION START: SPRING 2019

PHASE 2
DEVELOPMENT PLANNING
PROCESS UNDERWAY

NOTES:
 NEW PARKING LIGHT STANDARD.
 EXISTING PARKING TO REMAIN = 62 SPACES
 PROPOSED NEW PARKING = 2 SPACES
 TOTAL = 64 SPACES

G.M. DIEMERT ARCHITECT INC.
 957 FOURTH AVENUE EAST
 OWEN SOUND, ONTARIO
 SUITE 201
 N4K 2N9 (519)376-1975

Proposed Site Plan
 January 09, 2019

**St. Mary of the Assumption
 Roman Catholic Church**
 551 15th Street East, Owen Sound, Ontario

6th AVE. EAST